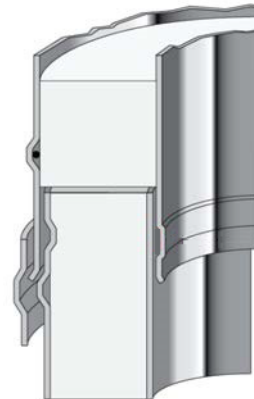
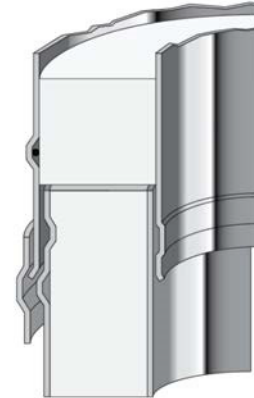


Product Data Sheet

Metalbestos Wood

Date: 2018-01-16

Application:	Double wall insulated system chimney system for all regular boilers, stoves and fireplaces in residential or non-residential application
Installation:	Outside or inside
Fuels:	Biofuels
Operating temperature:	≤ 400 °C
Sootfire resistance:	Ja
Mode of operation:	Negative pressure ($N1 \leq 40 \text{ Pa}$)
	Solid fuel
Inner liner material:	1.4404 (316L)
Outer casing material:	1.4301 (304)
Outer casing finish:	Matt PE 5092 (NCS)
Insulation type:	Rockwool ProRox WM950
Insulation density:	80 kg/m ³
Thermal resistance:	0,518 m ² K/W calculated at 200 °C with Ø150 mm liner according to EN 1859
Mean roughness:	1,0 mm according to EN 13384-1
Height above last structural support:	- 2,75 m (Ø80-Ø150) (with wide locking band)
Distance between lateral supports:	- 2,50 m (Ø80-Ø150)



Diameter Range:

Internal diameter:	80	100	130	150
External diameter:	180	200	230	250
Inner liner thickness:	0,5 mm			
Outer wall thickness:	0,5 mm			
Weight (kg/m) with inner liner thickness 0,5 mm	6,0	6,9	7,9	8,8

Certificates and designations:

WOOD – System chimney:	
CE Designation EN 1856-1:	T400 - N1 - W - VM - L50050 – GXX*

*distance to combustibles depends on diameter and type of installation:

Fig. 1: Installation outside fully ventilated

Distance to combustibles at:

T400: $\varnothing 80 - \varnothing 150 = G30$

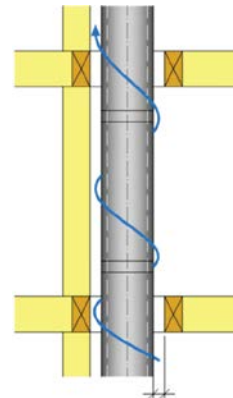


Fig. 1

Fig. 2: Installation through insulated closed floor

Distance to combustibles at:

T400: $\varnothing 80 - \varnothing 150 = G75$ for $h \leq 300$ mm

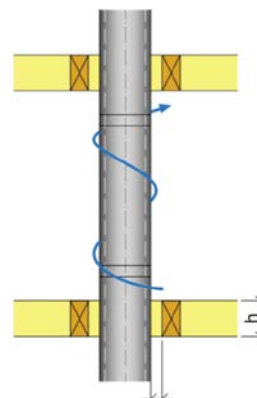


Fig. 2